

Study on Sexualized Content in Acting Roles

By Anemone Cerridwen. Research conducted December 2010 to March 2011. Posted July 2012 on the Film Content Database website. This version September 2013.

Explanation

One of my biggest concerns since I started taking acting lessons over a decade ago is the way actors are expected to perform sexualized content if it's written into the role. Apparently, we're all supposed to be just fine with it, no matter what it is, or at least fine with the more common forms of it.

Personally, I think it's all sexual harassment. I don't want to do it, and I suspect almost everyone else feels the same way. But if you want the role, you gotta pucker up (or whatever they're asking you to do). Totally illegal in most workplaces. And often, where it is legal, people tend to do a lot of drugs, so legal isn't necessarily the same thing as ok. Plus I can't help but think it has to mess up people's personal lives, especially as they get older and want to settle down in exclusive relationships.

So one of the things I did was file a legal complaint with a human rights tribunal, claiming that sexualized content was sexual harassment. They rejected my complaint, saying I could always choose other roles. Oh, really?

The Question

Can you always choose other roles? To what extent? Does it depend on whether you're male or female?

To be more specific: Are there sex differences in the number of roles available with sexualized content in them? Are there sex differences in the amount of sexualized content in each role? Do men and women have an equal chance to choose non-sexualized work if they wish to? And if you want to choose other kinds of roles, what are the odds of your being able to?

Note that this study in and of itself is not a judgement of sexualized content, just a question: how much is there for each sex? First you collect data, then you pass judgement on what it tells you.

The Study

What I did was take the top five grossing films from 2001-2005 for each category of Sex/Nudity as rated by Screenit!: None, Minor, Mild, Moderate, Heavy, and Extreme. Since most films are in the final three categories with respect to sexualized content, this sample is biased in favour of films that are less sexualized than normal. Selecting a more representative sample of films (compared to the actual proportions of films released in each category) might change the results.

I also limited myself to live action films.

I counted acts of touch, and categorized them as sexualized (not legal with a five-year-old) and non sexualized (legal with a five-year-old). I also kept track of sexualized or romantic dialogue and other content that wasn't actual touching or verbalization (e.g. looks), and dress. Basically anything that might make someone uncomfortable, in any kind of workplace, including touch that would not qualify as sexual harassment, but might still bother some people. (I added non-sexualized touch after I saw Boromir ruffle Frodo's hair. I'd HATE to have anyone do that to me.) I didn't include people carrying very small children who needed to be carried. I also didn't include simple handshakes, since that's office conduct, and we're all supposed to be used to it. (Though it might make some people uncomfortable.)

I watched each film once to see what it was about (if I hadn't seen it already), then as many times as needed (at least twice), counting events. Then I watched the film with the commentary and the DVD extras, to see if that added to my data. In total I watched each film from 3 to 8 times, plus sometimes repeating individual scenes many times per viewing. Can you tell I had time on my hands? I included deleted scenes, since my concern is what's in the job description rather than what audiences end up seeing. I also rated the

extended versions of the three Lord of the Rings films at the very end, after rating the theatrical releases earlier on.

Table 1. The Films

Film	Year	Sex/Nudity	MPAA	Box Office*	Order Rated
<i>Harry Potter and the Philosopher's Stone</i>	2001	None	PG	\$317,575,550	5
<i>LOTR: The Fellowship of the Ring</i>	2001	None	PG-13	\$314,776,114	1
<i>LOTR: The Fellowship of the Ring - Extended edition</i>	2001	None	PG-13	\$314,776,114	33
<i>Harry Potter and the Chamber of Secrets</i>	2002	None	PG	\$261,988,482	7
<i>War of the Worlds</i>	2005	None	PG-13	\$234,280,354	16
<i>The Santa Clause 2</i>	2002	None	G	\$139,225,854	21
<i>LOTR: Return of the King</i>	2003	Minor	PG-13	\$377,027,325	23
<i>LOTR: Return of the King - Extended edition</i>	2003	Minor	PG-13	\$377,027,325	32
<i>The Passion of the Christ</i>	2004	Minor	R	\$370,614,210	24
<i>LOTR: The Two Towers</i>	2002	Minor	PG-13	\$340,478,898	10
<i>LOTR: The Two Towers - Extended edition</i>	2002	Minor	PG-13	\$340,478,898	31
<i>The Chronicles of Narnia: The Lion the Witch and the Wardrobe</i>	2005	Minor	PG	\$291,709,845	19
<i>Harry Potter and the Prisoner of Azkaban</i>	2004	Minor	PG	\$249,358,727	2
<i>Star Wars Episode 3: Revenge of the Sith</i>	2005	Mild	PG-13	\$380,262,555	3
<i>Spider-Man 2</i>	2004	Mild	PG-13	\$373,585,825	28
<i>Star Wars Episode 2: Attack of the Clones</i>	2002	Mild	PG	\$310,675,583	9
<i>Pirates of the Caribbean</i>	2003	Mild	PG-13	\$305,388,685	6
<i>Charlie and the Chocolate Factory</i>	2005	Mild	PG	\$206,456,431	12
<i>Spider-Man</i>	2002	Moderate	PG-13	\$403,706,375	25
<i>Harry Potter and the Goblet of Fire</i>	2005	Moderate	PG-13	\$289,994,397	8
<i>Bruce Almighty</i>	2003	Moderate	PG-13	\$242,829,261	15
<i>My Big Fat Greek Wedding</i>	2002	Moderate	PG	\$241,437,427	29
<i>King Kong</i>	2005	Moderate	PG-13	\$218,080,025	30
<i>The Matrix Reloaded</i>	2003	Heavy	R	\$281,492,479	4
<i>Rush Hour 2</i>	2001	Heavy	PG-13	\$226,138,454	22
<i>X2: X-Men United</i>	2003	Heavy	PG-13	\$214,948,780	11
<i>Austin Powers in Goldmember</i>	2002	Heavy	PG-13	\$213,079,163	13
<i>Mr & Mrs Smith</i>	2005	Heavy	PG-13	\$186,336,103	18
<i>Meet the Fockers</i>	2004	Extreme	PG-13	\$279,167,575	20
<i>Wedding Crashers</i>	2005	Extreme	R	\$209,218,368	26
<i>The Longest Yard</i>	2005	Extreme	PG-13	\$158,115,031	27
<i>American Pie 2</i>	2001	Extreme	R	\$145,103,595	14
<i>Bad Boys II</i>	2003	Extreme	R	\$138,396,624	17

*Box office is worldwide, not adjusted for inflation, downloaded 2007.

My Results

The following charts are for cumulative means. That is, the first data point is the first value, the second is the average of the first two values, the third is the average of the first three values, etc. I have included both shorter and extended versions of The Lord of the Rings trilogy. I don't think it makes any difference.

Everything is for the percentage of female roles/items out of the total count or sum. That is, the percentage of credits that are female, the percentage of cast members wearing (for example) sexy clothing who are female, and the percentage of total sexy clothing events where the wearer is female. For main characters, it was easy to assign a particular event to a particular character, but for minor characters and extras I sometimes had to guess if it was the same person or a different one with each new event. As it happens, the cumulative percent female for both counts tend to follow each other closely.

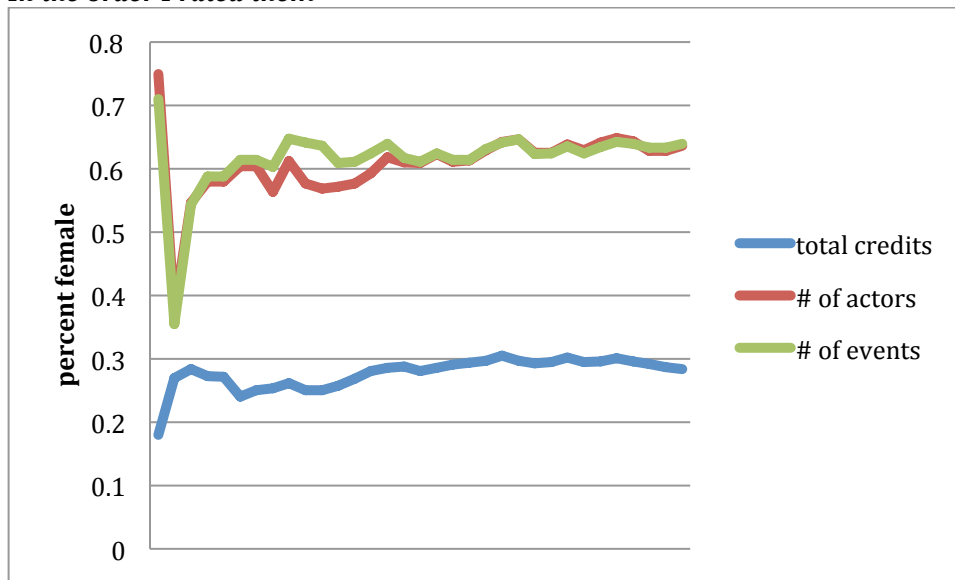
The first chart in each section is of the films in the order I rated them. When I first started this study, I missed a lot of detail. As I went on, from film to film (order chosen for convenience, i.e. whatever the library

or rental store happened to have in next), my notes got progressively more detailed and the overall counts went up up up. (Compare the raw data from earlier films to later films in tables 2, 4 and 5 to see how much more detailed I got as time went on.) However, that may not have affected the proportion of the count that was female. To check that, I have charted the cumulative percent female in the order I originally rated the films, in alphabetical order, and in reverse alphabetical order. It really doesn't seem to make any difference. I rated enough films that errors and eccentricities in ratings seem to have disappeared. I think it's obvious from this exercise that when you have enough films, you can afford to make mistakes, because the sheer size of the database absorbs variations.

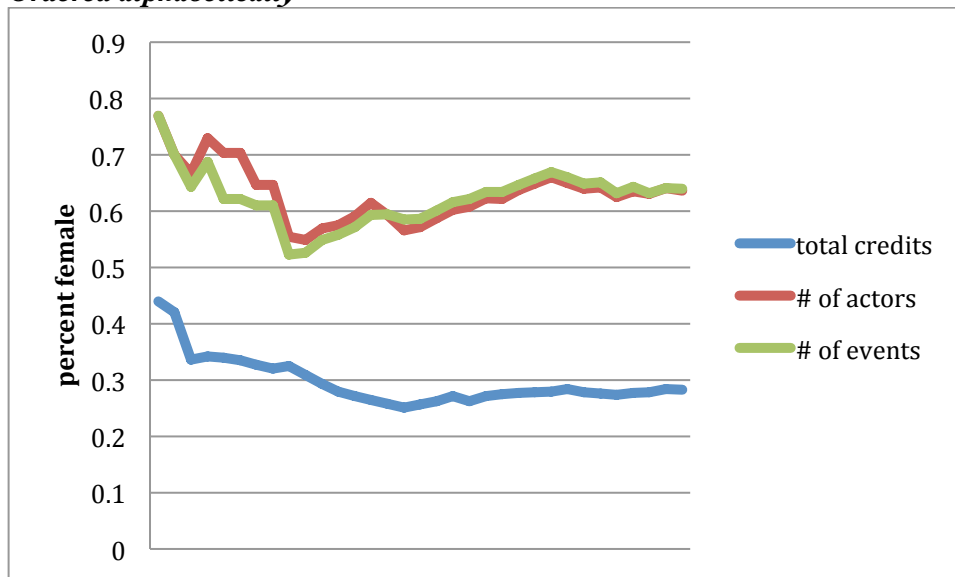
Sexy Clothing/Nudity

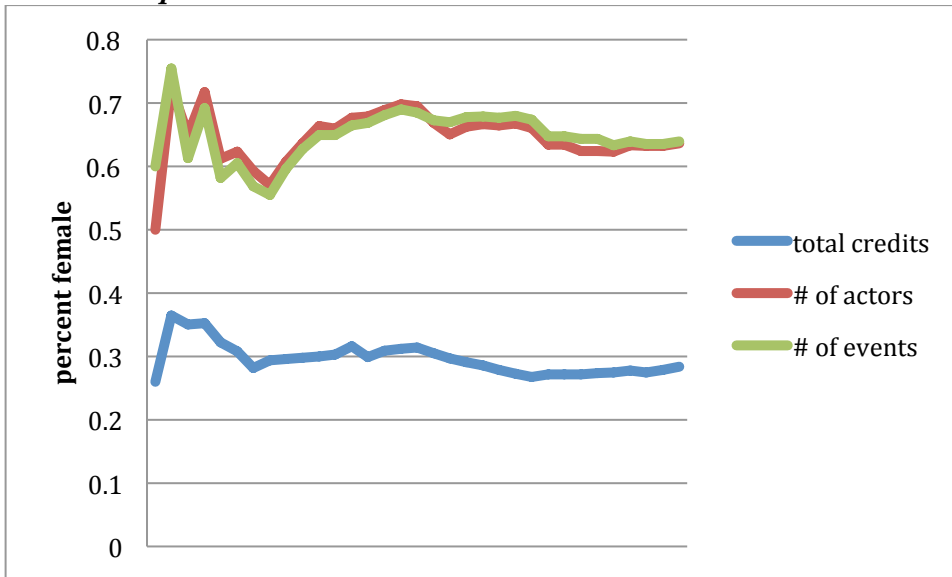
As you can see, this category is highly gendered. Women get proportionally more sexy clothing or nudity than men do.

In the order I rated them

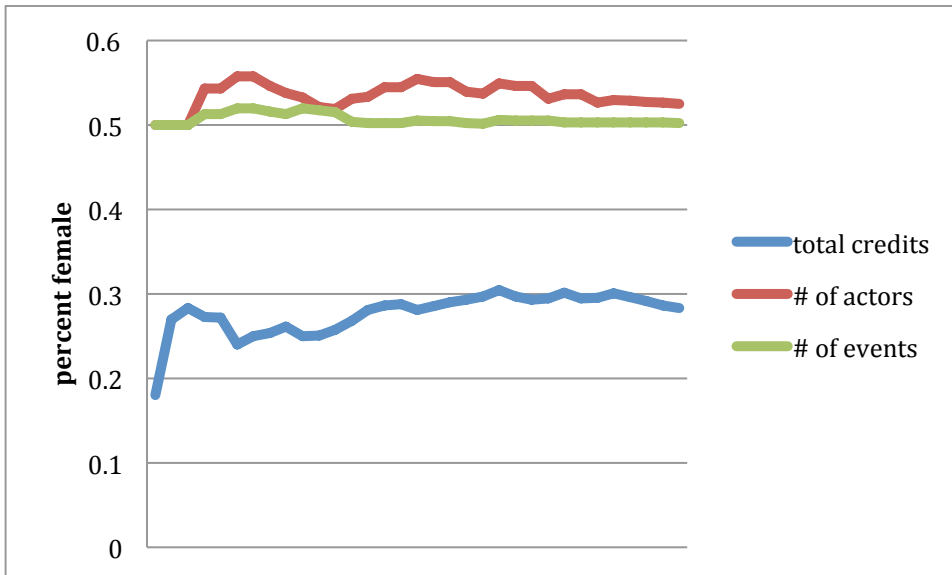


Ordered alphabetically

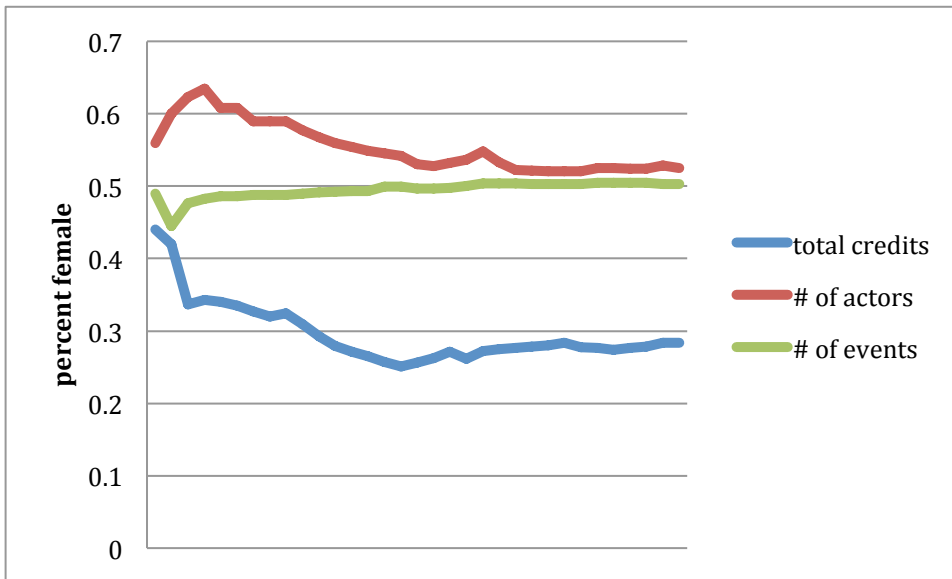


In reverse alphabetic order***Intimate Touch***

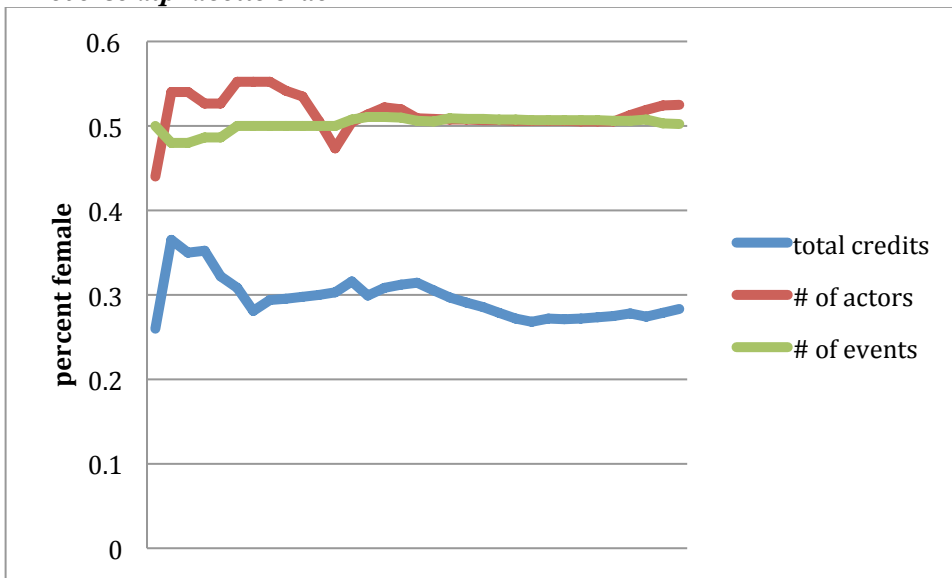
As you can see, this category is also highly gendered. The situation here is that intimate touch is more or less equally divided between men and women (with a bit of girl-on-girl action to take it above 50% female), but women have far fewer roles than men, so women are proportionally more likely to have to perform this kind of content.

In the order I rated them

Ordered alphabetically



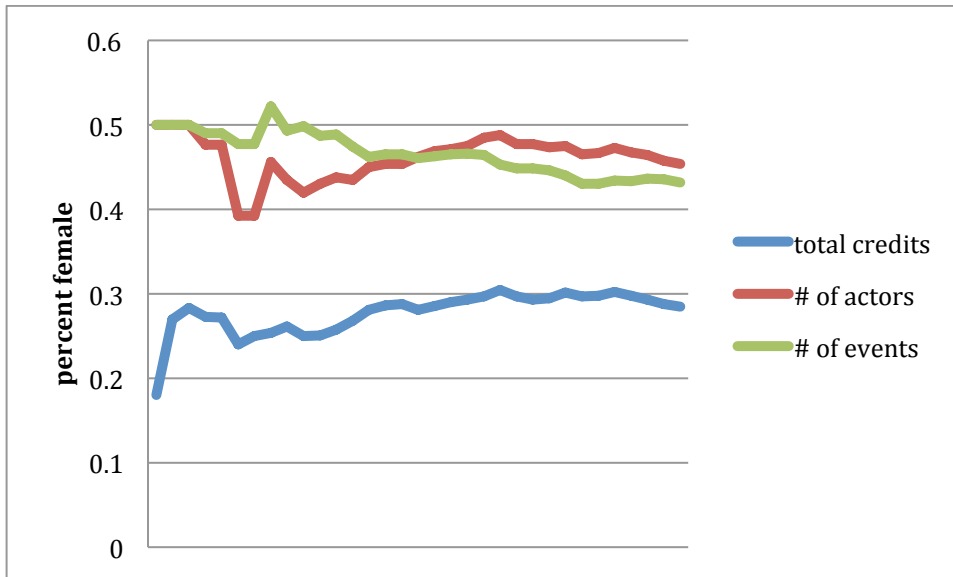
In reverse alphabetic order



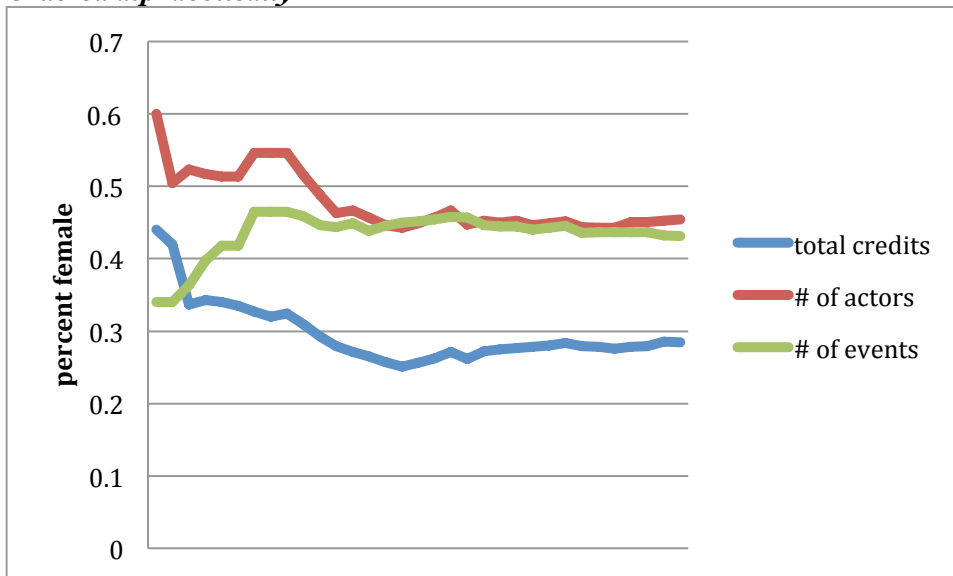
Intimate Dialogue/Other Nonverbals

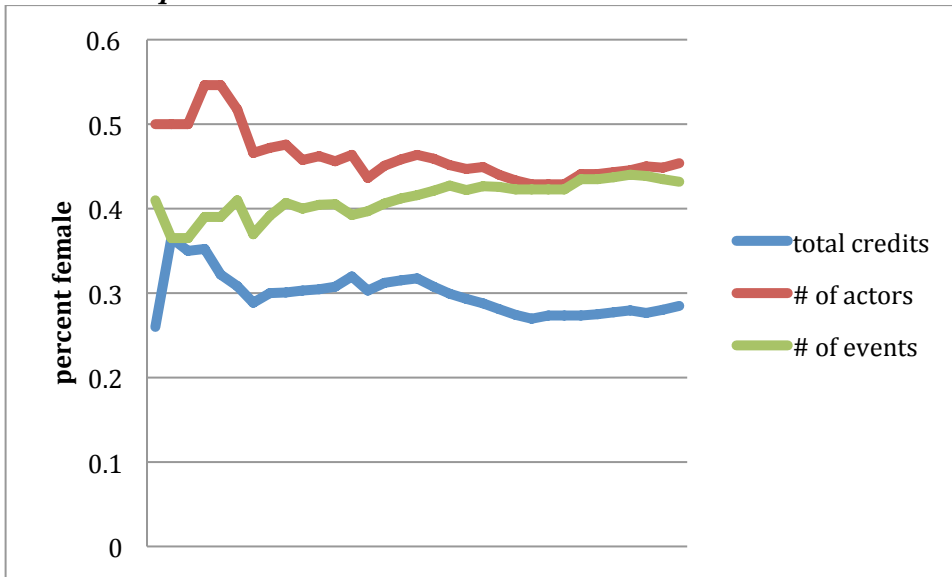
Same as for intimate touch, above. Except that I was including situations where people talk about intimate relationships with third parties, and it seems that men do more of that (in these films) than women do. Who knew?

In the order I rated them

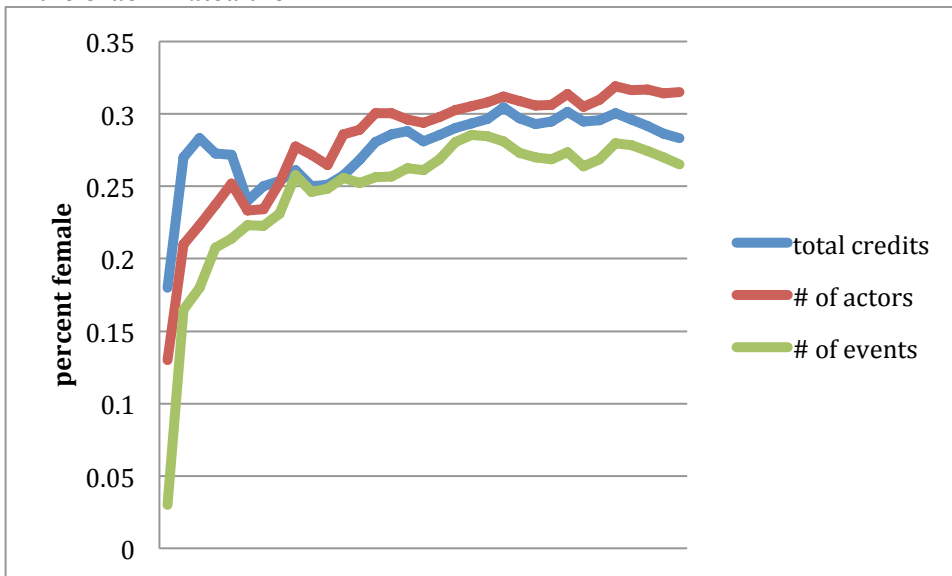


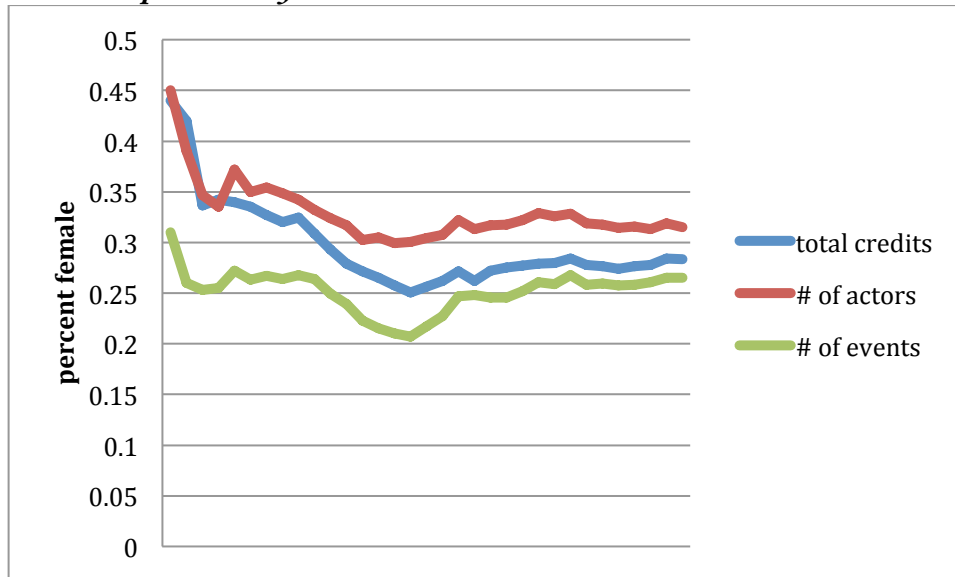
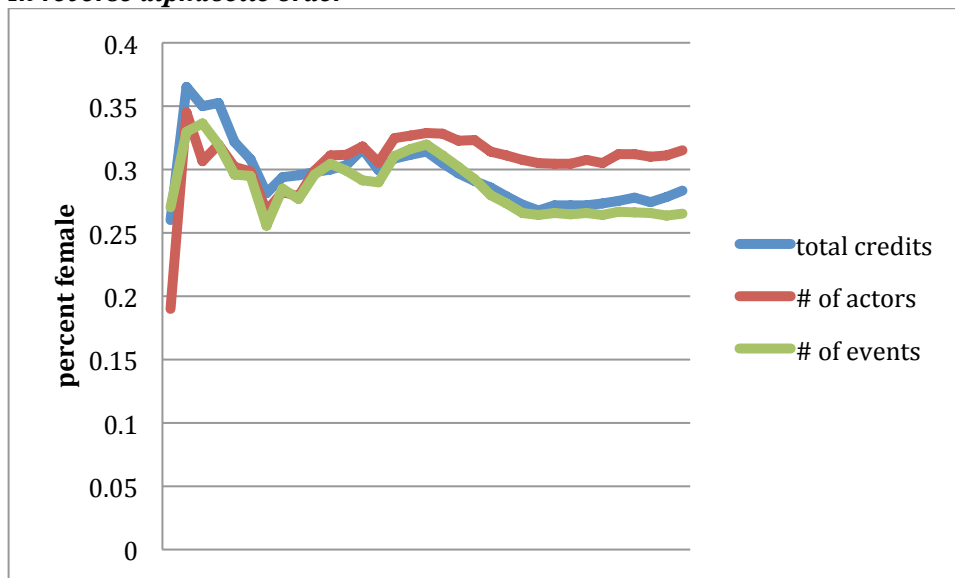
Ordered alphabetically



In reverse alphabetic order***Semi-intimate Touch***

Now here we finally get gender equity. The proportion of semi-intimate touch (stuff that would be legal with a five-year-old, but is more intimate than shaking hands) is in proportion to the percentage of females in the cast.

In the order I rated them

Ordered alphabetically**In reverse alphabetic order**

I have not analyzed the data further than by sex. For example, I could have looked at age x sex interactions (adults interacting with adults, adults interacting with minors, minors interacting with minors, taking sex/gender into account), but I wasn't that keen. You're more than welcome to if you want to. Let me know how it goes.

Your Turn Now?

This study took me three months full time. I would never ask anyone to repeat what I've done. (I got very tired by the end, and it was a while before I stopped automatically counting events when watching movies for fun.) But on the other hand, if anyone wanted to repeat this study, using their own criteria for everything, then we could calculate an inter-rater reliability quotient and see whether it makes any difference who the rater is and what criteria are used. As long as you use consistent criteria throughout, and

we compare summary data, it shouldn't matter exactly what your criteria are. But it might. You never know.

So if you have as much time to kill as I did (on disability? in a hip cast even?) feel free to have a go at it and send me your results.

Even if no one has the time to replicate what I've done, I welcome practical comments on methodology and results.

Also, if anyone really really really wants an interactive version of my data, so they can update it, argue about it with each other, etc. etc., let me know, with suggestions as to how it could be set up. As it is now, the data is static, but I could set up an interactive version if people are really really keen.

Notes

Where I didn't know who did what, I often listed them below the credits rather than guessing who was who, but sometimes I guessed. Since I didn't count the ones not in the credits as cast, it doesn't really change anything. The credits are as they were when I originally downloaded them from IMDb in 2007. Some cast lists have probably changed since then.

I would probably have rated the earlier rated films a lot harder if I had rated them later on, and yes I made mistakes, but I was too tired to go back and redo anything. Also, I sometimes didn't include roles that were just voice (e.g. for CGI characters) in the counts, but I may not have been consistent here. I doubt it makes much difference, given how many films I rated. See charts for the cumulative means in different orders to see what I mean.

Edited to add, September 2013.

Stacy Smith and her team at USC Annenberg has been doing this sort of research for feature films for some time now. (Reports are on [her website](#).) Unlike me, her team is much more systematic, with a detailed set of criteria they train on before starting each study. Also, unlike me, there is a large team doing this work. They aren't including non-sexualized touch, because some people have lives. But they *are* looking at the age of the actor. Their work is definitely worth checking out. And it would probably hold up better in court than my data, should it come to that. I'm very glad they're there.

I wasn't aware of their work when I did mine. I'm not sure if it would have made much difference, but I probably would have used their criteria for sexy clothing/nudity, instead of muddling through on my own.

Summary Tables

Films are listed in the order they were rated. As you can see, I found more and more detail as I went along.

Table 2. Sexy Clothing/Nudity

Film	Credits				Item count				Item sum			
	m	f	%f	cum%f	m	f	%f	cum%f	m	f	%f	cum%f
<i>Fellowship of Ring</i>	50	11	0.18	0.18	1	3	0.75	0.75	2	5	0.71	0.71
<i>HP Prisoner of Azkaban</i>	35	20	0.36	0.27	3	0	0	0.38	3	0	0	0.36
<i>SW 3: Revenge of Sith</i>	61	28	0.31	0.29	1	8	0.89	0.55	1	11	0.92	0.54
<i>Matrix Reloaded</i>	59	19	0.24	0.28	6	13	0.68	0.58	7	18	0.72	0.59
<i>HP Philosopher's Stone</i>	37	14	0.27	0.28	0	0		0.58	0	0		0.59
<i>Pirates of the Caribbean</i>	74	6	0.08	0.24	7	16	0.70	0.60	7	18	0.72	0.61
<i>HP Chamber of Secrets</i>	52	23	0.31	0.25	0	0		0.60	0	0		0.61
<i>HP Goblet of Fire</i>	53	21	0.28	0.26	7	4	0.36	0.56	9	11	0.55	0.60
<i>SW 2: Attack of Clones</i>	51	24	0.32	0.26	2	19	0.906	0.61	3	30	0.91	0.65
<i>Two Towers</i>	46	8	0.15	0.25	2	1	0.33	0.58	2	3	0.60	0.64
<i>X2: X-Men United</i>	53	19	0.26	0.25	8	8	0.50	0.57	14	21	0.60	0.64
<i>Charlie Choc. Factory</i>	33	16	0.33	0.26	2	3	0.60	0.57	9	5	0.36	0.61
<i>AP in Goldmember</i>	64	42	0.40	0.27	32	54	0.63	0.58	45	76	0.63	0.61
<i>American Pie 2</i>	44	34	0.44	0.28	24	82	0.77	0.59	43	141	0.77	0.62
<i>Bruce Almighty</i>	64	36	0.36	0.29	3	33	0.92	0.62	11	50	0.82	0.64
<i>War of the Worlds</i>	104	50	0.32	0.29	1	1	0.5	0.61	2	1	0.33	0.62
<i>Bad Boys II</i>	92	19	0.17	0.28	40	59	0.60	0.61	63	72	0.53	0.61
<i>Mr & Mrs Smith</i>	66	37	0.36	0.29	6	30	0.83	0.62	13	61	0.82	0.62
<i>Lion Witch Wardrobe</i>	37	23	0.38	0.29	7	5	0.42	0.61	7	6	0.46	0.61
<i>Meet the Fockers</i>	30	16	0.35	0.29	24	44	0.65	0.61	38	59	0.61	0.61
<i>Santa Clause 2</i>	35	20	0.36	0.30	1	11	0.92	0.63	1	14	0.93	0.63
<i>Rush Hour 2</i>	26	23	0.47	0.31	14	118	0.89	0.64	21	123	0.85	0.64
<i>Return of the King</i>	49	7	0.13	0.30	3	8	0.73	0.65	4	11	0.73	0.65
<i>Passion of the Christ</i>	60	15	0.20	0.29	13	3	0.19	0.63	19	3	0.14	0.62
<i>Spider-Man</i>	70	36	0.34	0.30	16	25	0.61	0.62	20	36	0.64	0.62
<i>Wedding Crashers</i>	54	47	0.47	0.30	6	121	0.95	0.64	15	157	0.91	0.64
<i>Longest Yard</i>	106	14	0.12	0.29	51	36	0.41	0.63	68	36	0.35	0.62
<i>Spider-Man 2</i>	66	31	0.32	0.30	3	51	0.94	0.64	9	65	0.88	0.63
<i>Big Fat Greek Wed.</i>	25	20	0.44	0.30	7	33	0.83	0.65	14	85	0.86	0.64
<i>King Kong</i>	94	19	0.17	0.30	80	83	0.51	0.64	83	100	0.55	0.64
<i>Two Towers Ext.</i>	46	8	0.15	0.29	7	2	0.22	0.63	8	7	0.47	0.63
<i>Return of King Ext.</i>	49	7	0.13	0.29	6	10	0.63	0.63	9	16	0.64	0.63
<i>Fellowship of Ring Ext.</i>	50	11	0.18	0.28	3	21	0.88	0.64	5	25	0.83	0.64

Table 3. *Intimate Touch*

Film	Credits				Item count				Item sum			
	m	f	%f	cum%f	m	f	%f	cum%f	m	f	%f	cum%f
<i>Fellowship of Ring</i>	50	11	0.18	0.18	1	1	0.50	0.50	5	5	0.50	0.50
<i>HP Prisoner of Azkaban</i>	35	20	0.36	0.27	0	0		0.50	0	0		0.50
<i>SW 3: Revenge of Sith</i>	61	28	0.31	0.29	4	4	0.50	0.50	11	11	0.50	0.50
<i>Matrix Reloaded</i>	59	19	0.24	0.28	3	5	0.63	0.54	17	20	0.54	0.51
<i>HP Philosopher's Stone</i>	37	14	0.27	0.28	0	0		0.54	0	0		0.51
<i>Pirates of the Caribbean</i>	74	6	0.08	0.24	4	6	0.60	0.56	11	13	0.54	0.52
<i>HP Chamber of Secrets</i>	52	23	0.31	0.25	0	0		0.56	0	0		0.52
<i>HP Goblet of Fire</i>	53	21	0.28	0.26	3	3	0.50	0.55	4	4	0.50	0.52
<i>SW 2: Attack of Clones</i>	51	24	0.32	0.26	1	1	0.50	0.54	6	6	0.50	0.51
<i>Two Towers</i>	46	8	0.15	0.25	1	1	0.50	0.53	4	5	0.56	0.52
<i>X2: X-Men United</i>	53	19	0.26	0.25	5	4	0.44	0.52	14	14	0.50	0.52
<i>Charlie Choc. Factory</i>	33	16	0.33	0.26	2	2	0.50	0.52	2	2	0.50	0.52
<i>AP in Goldmember</i>	64	42	0.40	0.27	8	14	0.64	0.53	26	17	0.40	0.50
<i>American Pie 2</i>	44	34	0.44	0.28	11	14	0.56	0.53	51	49	0.49	0.50
<i>Bruce Almighty</i>	64	36	0.36	0.29	1	2	0.67	0.54	14	14	0.50	0.50
<i>War of the Worlds</i>	104	50	0.32	0.29	0	0		0.54	0	0		0.50
<i>Bad Boys II</i>	92	19	0.17	0.28	4	8	0.67	0.55	11	13	0.54	0.50
<i>Mr & Mrs Smith</i>	66	37	0.36	0.29	1	1	0.50	0.55	14	14	0.50	0.50
<i>Lion Witch Wardrobe</i>	37	23	0.38	0.29	0	0		0.55	0	0		0.50
<i>Meet the Fockers</i>	30	16	0.35	0.29	5	3	0.38	0.54	15	13	0.46	0.50
<i>Santa Clause 2</i>	35	20	0.36	0.30	1	1	0.50	0.54	2	2	0.50	0.50
<i>Rush Hour 2</i>	26	23	0.47	0.31	1	3	0.75	0.55	3	4	0.57	0.51
<i>Return of King</i>	49	7	0.13	0.30	2	2	0.5	0.55	3	3	0.50	0.51
<i>Passion of the Christ</i>	60	15	0.20	0.29	0	0		0.55	0	0		0.51
<i>Spider-Man</i>	70	36	0.34	0.30	3	1	0.25	0.53	4	4	0.50	0.51
<i>Wedding Crashers</i>	54	47	0.47	0.30	9	16	0.64	0.54	52	45	0.46	0.50
<i>Longest Yard</i>	106	14	0.12	0.29	0	0		0.54	0	0		0.50
<i>Spider-Man 2</i>	66	31	0.32	0.30	2	1	0.33	0.53	7	7	0.50	0.50
<i>Big Fat Greek Wed.</i>	25	20	0.44	0.30	2	3	0.60	0.53	18	19	0.51	0.50
<i>King Kong</i>	94	19	0.17	0.30	1	1	0.50	0.53	2	2	0.50	0.50
<i>Two Towers Ext.</i>	46	8	0.15	0.29	1	1	0.50	0.53	5	5	0.50	0.50
<i>Return of King Ext.</i>	49	7	0.13	0.29	2	2	0.50	0.53	3	3	0.50	0.50
<i>Fellowship of Ring Ext.</i>	50	11	0.18	0.28	1	1	0.50	0.52	1	1	0.50	0.50

Table 4. *Intimate Dialogue, Non Verbals*

Film	Credits				Item count				Item sum			
	m	f	%f	cum%f	m	f	%f	cum%f	m	f	%f	cum%f
<i>Fellowship of Ring</i>	50	11	0.18	0.18	1	1	0.50	0.50	1	1	0.50	0.50
<i>HP Prisoner of Azkaban</i>	35	20	0.36	0.27	0	0		0.50	0	0		0.50
<i>SW3: Revenge of Sith</i>	61	28	0.31	0.29	1	1	0.50	0.50	6	6	0.50	0.50
<i>Matrix Reloaded</i>	59	19	0.24	0.28	4	3	0.43	0.48	10	9	0.47	0.49
<i>HP Philosopher's Stone</i>	37	14	0.27	0.28	0	0		0.48	0	0		0.49
<i>Pirates Caribbean</i>	74	6	0.08	0.24	6	1	0.14	0.39	14	11	0.44	0.48
<i>HP Chamber of Secrets</i>	52	23	0.31	0.25	0	0		0.39	0	0		0.48
<i>HP Goblet of Fire</i>	53	21	0.28	0.26	2	5	0.71	0.46	9	21	0.70	0.52
<i>SW2: Attack of Clones</i>	51	24	0.32	0.26	2	1	0.33	0.44	13	7	0.35	0.49
<i>Two Towers</i>	46	8	0.15	0.25	4	2	0.33	0.42	9	10	0.53	0.50
<i>X2: X-Men United</i>	53	19	0.26	0.25	4	4	0.50	0.43	13	9	0.41	0.49
<i>Charlie and Choc. Factory</i>	33	16	0.33	0.26	2	2	0.50	0.44	3	3	0.50	0.49
<i>AP in Goldmember</i>	64	42	0.40	0.27	22	15	0.41	0.44	72	37	0.34	0.47
<i>American Pie 2</i>	44	34	0.44	0.28	17	25	0.60	0.45	147	75	0.34	0.46
<i>Bruce Almighty</i>	64	36	0.36	0.29	4	4	0.50	0.45	23	23	0.50	0.46
<i>War of the Worlds</i>	104	50	0.32	0.29	0	0		0.45	0	0		0.46
<i>Bad Boys II</i>	92	19	0.17	0.28	8	10	0.56	0.46	22	15	0.41	0.46
<i>Mr & Mrs Smith</i>	66	37	0.36	0.29	8	10	0.56	0.47	49	48	0.49	0.46
<i>Lion Witch Wardrobe</i>	37	23	0.38	0.29	1	1	0.50	0.47	2	2	0.50	0.47
<i>Meet the Fockers</i>	30	16	0.35	0.29	14	16	0.53	0.47	69	61	0.47	0.47
<i>Santa Clause 2</i>	35	20	0.36	0.30	5	9	0.64	0.48	24	19	0.44	0.46
<i>Rush Hour 2</i>	26	23	0.47	0.31	6	7	0.54	0.49	38	14	0.27	0.45
<i>Return of King</i>	49	7	0.13	0.30	5	2	0.29	0.48	7	4	0.36	0.45
<i>Passion of the Christ</i>	60	15	0.2	0.29	0	0		0.48	0	0		0.45
<i>Spider-Man</i>	70	36	0.34	0.30	6	4	0.40	0.47	19	13	0.41	0.45
<i>Wedding Crashers</i>	54	47	0.47	0.30	16	16	0.50	0.47	134	63	0.32	0.44
<i>Longest Yard</i>	106	14	0.17	0.29	28	10	0.26	0.46	78	21	0.21	0.43
<i>Spider-Man 2</i>	66	31	0.32	0.30	4	4	0.50	0.47	29	23	0.44	0.43
<i>Big Fat Greek Wed.</i>	25	20	0.44	0.30	8	13	0.62	0.47	41	44	0.52	0.43
<i>King Kong</i>	94	19	0.17	0.30	6	3	0.33	0.47	11	8	0.42	0.43
<i>Two Towers Ext.</i>	46	8	0.15	0.29	3	2	0.40	0.46	8	8	0.50	0.44
<i>Return of King Ext.</i>	49	7	0.13	0.29	8	3	0.27	0.46	11	8	0.42	0.44
<i>Fellowship of Ring Ext.</i>	50	11	0.18	0.28	7	4	0.36	0.45	16	8	0.33	0.43

Table 5. *Semi-intimate Touch*

Film	Credits				Item count				Item sum			
	m	f	%f	cum%f	m	f	%f	cum%f	m	f	%f	cum%f
<i>Fellowship of Ring</i>	50	11	0.18	0.18	27	4	0.13	0.13	228	8	0.03	0.03
<i>HP Prisoner of Azkaban</i>	35	20	0.36	0.27	22	9	0.29	0.21	99	42	0.30	0.17
<i>SW3: Revenge of Sith</i>	61	28	0.31	0.29	3	1	0.25	0.22	15	4	0.21	0.18
<i>Matrix Reloaded</i>	59	19	0.24	0.28	13	5	0.28	0.24	39	16	0.29	0.21
<i>HP Philosopher's Stone</i>	37	14	0.27	0.28	24	11	0.31	0.25	87	27	0.24	0.21
<i>Pirates Caribbean</i>	74	6	0.08	0.24	42	7	0.14	0.23	152	57	0.27	0.22
<i>HP Chamber of Secrets</i>	52	23	0.31	0.25	29	9	0.24	0.23	126	36	0.22	0.22
<i>HP Goblet of Fire</i>	53	21	0.28	0.26	47	29	0.38	0.25	278	111	0.29	0.23
<i>SW2: Attack of Clones</i>	51	24	0.32	0.26	11	10	0.48	0.28	39	34	0.47	0.26
<i>Two Towers</i>	46	8	0.15	0.25	76	22	0.22	0.27	343	55	0.14	0.25
<i>X2: X-Men United</i>	53	19	0.26	0.25	42	10	0.19	0.27	157	58	0.27	0.25
<i>Charlie Choc. Factory</i>	33	16	0.33	0.26	22	24	0.52	0.29	96	49	0.34	0.26
<i>AP in Goldmember</i>	64	42	0.40	0.27	49	24	0.33	0.29	150	40	0.21	0.25
<i>American Pie 2</i>	44	34	0.44	0.28	40	33	0.45	0.30	176	78	0.31	0.26
<i>Bruce Almighty</i>	64	36	0.36	0.29	49	21	0.30	0.30	139	50	0.26	0.26
<i>War of the Worlds</i>	104	50	0.32	0.29	76	23	0.23	0.30	244	131	0.35	0.26
<i>Bad Boys II</i>	92	19	0.17	0.28	64	22	0.26	0.29	146	47	0.24	0.26
<i>Mr & Mrs Smith</i>	66	37	0.36	0.29	30	17	0.36	0.30	72	48	0.40	0.27
<i>Lion Witch Wardrobe</i>	37	23	0.38	0.29	25	16	0.39	0.30	135	132	0.49	0.28
<i>Meet the Fockers</i>	30	16	0.35	0.29	30	17	0.36	0.31	233	145	0.38	0.29
<i>Santa Clause 2</i>	35	20	0.36	0.30	43	24	0.36	0.31	188	70	0.27	0.28
<i>Rush Hour 2</i>	26	23	0.47	0.31	93	62	0.40	0.31	297	76	0.20	0.28
<i>Return of the King</i>	49	7	0.13	0.30	57	18	0.24	0.31	306	35	0.10	0.27
<i>Passion of the Christ</i>	60	15	0.20	0.29	80	24	0.23	0.31	319	80	0.20	0.27
<i>Spider-Man</i>	70	36	0.34	0.30	70	33	0.32	0.31	233	75	0.24	0.27
<i>Wedding Crashers</i>	54	47	0.47	0.30	80	79	0.50	0.31	243	154	0.39	0.27
<i>The Longest Yard</i>	106	14	0.12	0.29	113	10	0.08	0.31	766	15	0.02	0.26
<i>Spider-Man 2</i>	66	31	0.32	0.30	89	67	0.43	0.31	184	116	0.39	0.27
<i>Big Fat Greek Wed.</i>	25	20	0.44	0.30	29	41	0.59	0.32	191	290	0.60	0.28
<i>King Kong</i>	94	19	0.17	0.30	120	37	0.24	0.32	266	79	0.23	0.28
<i>Two Towers, Ext.</i>	46	8	0.15	0.29	95	44	0.32	0.32	464	91	0.16	0.27
<i>Return of King, Ext.</i>	49	7	0.13	0.29	86	27	0.24	0.31	401	58	0.13	0.27
<i>Fellowship of Ring Ext.</i>	50	11	0.18	0.28	65	33	0.34	0.31	446	55	0.11	0.27